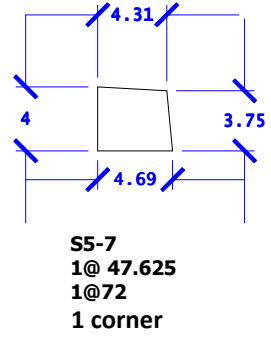
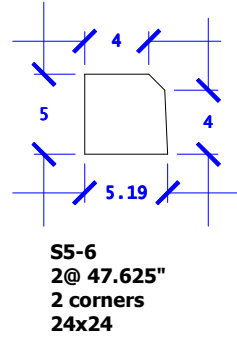
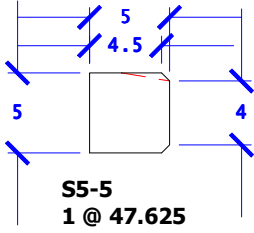
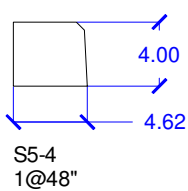
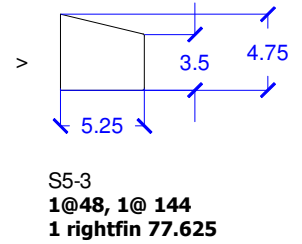
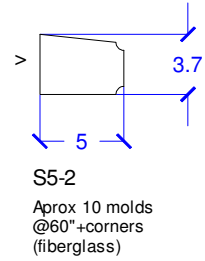
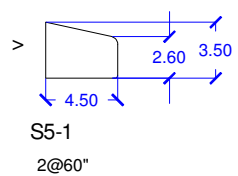
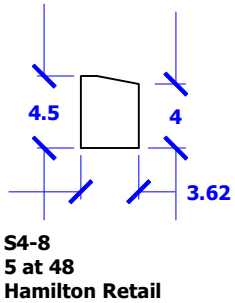
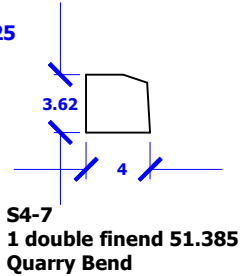
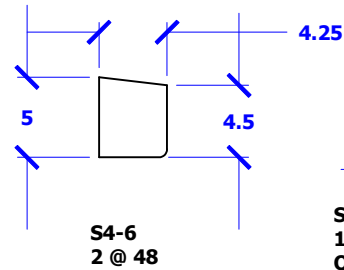
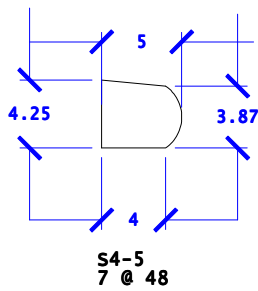
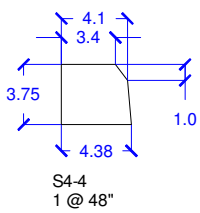
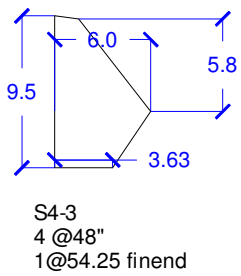
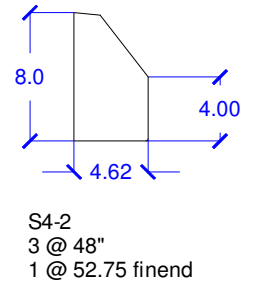
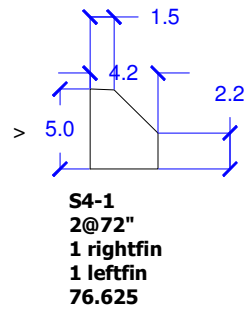
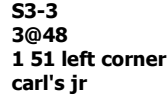
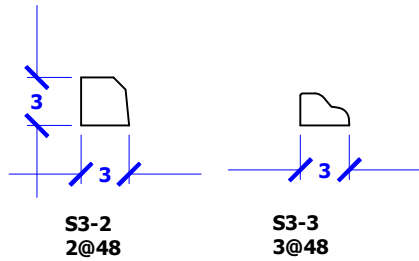
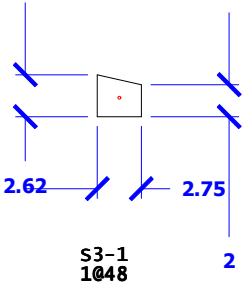


# SILLS SHEET 1 - LAST REVISION 3/17/21



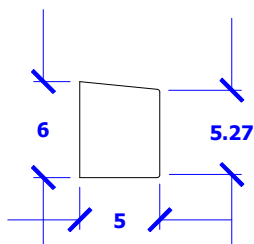
882 N. Marshall Way  
Layton, UT 84041  
Ph. (801) 544-9054  
Fax: (801) 544-9154



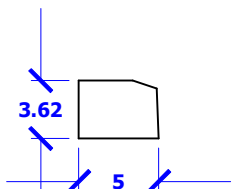
# SILLS SHEET 2 - LAST REVISION 3/17/21



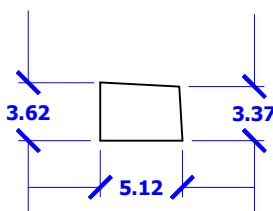
882 N. Marshall Way  
Layton, UT 84041  
Ph. (801) 544-9054  
Fax: (801) 544-9154



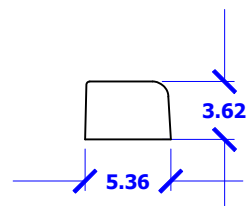
**S5-8 2Ø72**



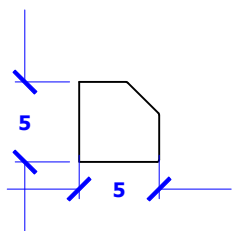
**S5-9**  
1@96  
2 doublecorner 51.25  
bulkhead  
centerville library



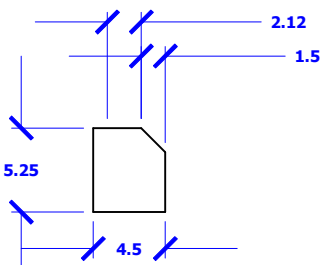
**S5-10**  
1@48  
1@96  
1steelbulkhead



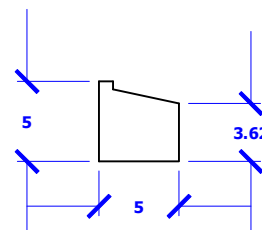
**S5-11**  
5@50.5 double finend  
5@48  
Walgreens Gardnerville



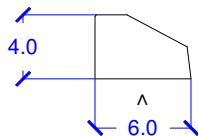
**S5-12**  
2 53.375 right 2 ways  
2 53.375 left 2 ways  
quarry bend



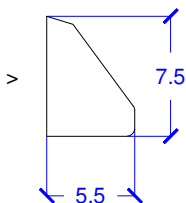
**S5-13**  
2 left 61.75  
2 right 61.75  
central District



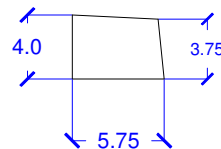
**S5-14**  
3 at 96  
W Jord Elem #4



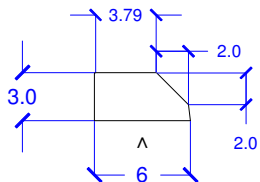
**S6-3**  
1@60"  
1corner(fbrgls) w/  
finends (mezz)



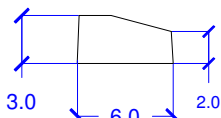
**S6-1**  
4 @48"



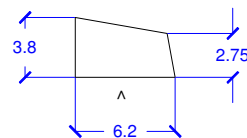
**S6-2**  
4@48+ corner  
+48 vertfinend  
Taylorsville Senior  
Center



**S6-4**  
3 @ 48



**S6-5**  
2@64  
1Ø60

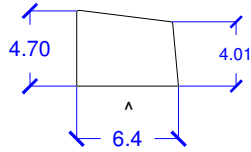


**S6-6**  
1@48  
5@60  
1 curve 15' inrad  
(curve mold gfrp)

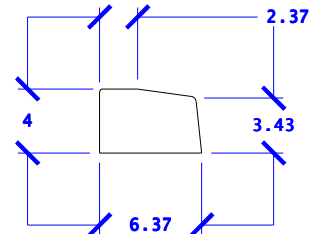
# SILLS SHEET 3 - LAST REVISION 3/17/21



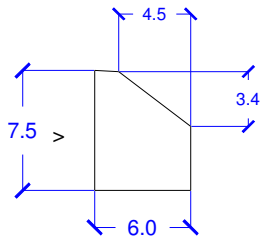
882 N. Marshall Way  
Layton, UT 84041  
Ph. (801) 544-9054  
Fax: (801) 544-9154



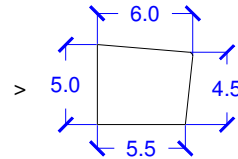
**S6-7**  
12@48"  
1incorn  
1outcorn



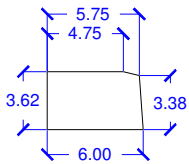
**S6-8**  
2@48



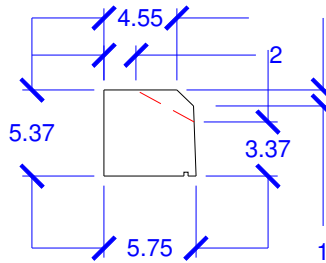
**S6-9**  
1@79"  
2@71"  
8@47"  
1@53"finend



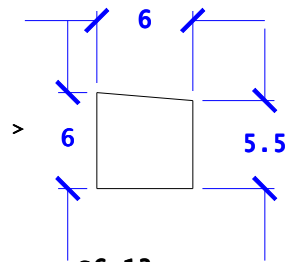
**S6-10**  
4 @ 72"



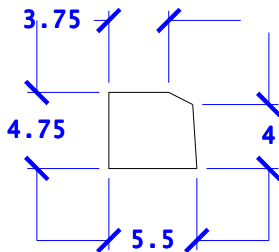
**S6-11**  
12 @48"  
2 outcorn 24x24



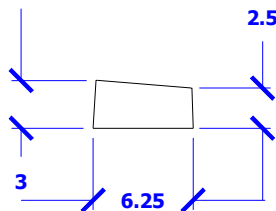
**S6-12**  
2 @ 43.375  
1 @ 71.375



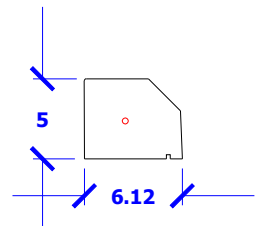
**S6-13**  
2 @ 48"



**S6-14**  
1 @ 60



**S6-15**  
2 @ 48

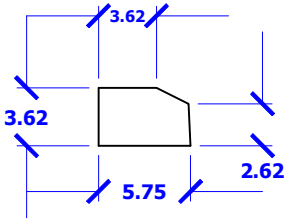


**S6-16**  
4 @ 95.625  
3left wrap 53  
3 right wrap 53  
3 corners when  
5 tall  
when 6" tall  
6finendbulkheads

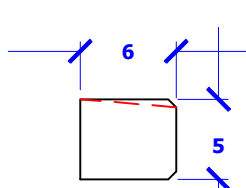
# SILLS SHEET 4 - LAST REVISION 3/17/21



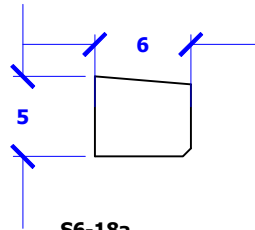
882 N. Marshall Way  
Layton, UT 84041  
Ph. (801) 544-9054  
Fax: (801) 544-9154



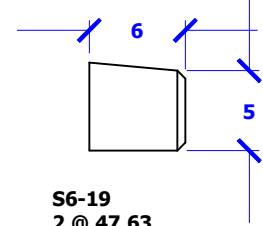
**S6-17**  
8 @ 47.625



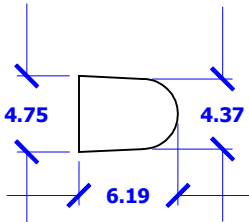
**S6-18**  
1 at 64 lug ends  
Cypress



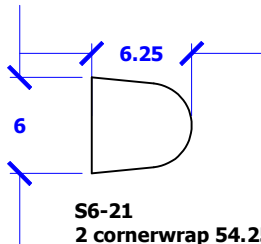
**S6-18a**  
1 at 47.625  
S6-18 compatible



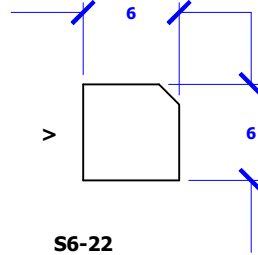
**S6-19**  
2 @ 47.63  
chamfer ends  
Cypress  
Riverton



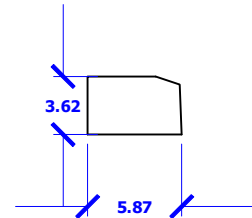
**S6-20**  
1 rubber wood end  
corner



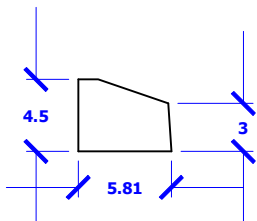
**S6-21**  
2 cornerwrap 54.25  
1 straight 48  
Sandy Fire



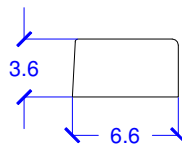
**S6-22**  
1 right 74 1 left 74  
Central District



**S6-23**  
1 at 96  
Central District  
store with S5-9



**S6-24**  
3 at 96"  
Clinton City

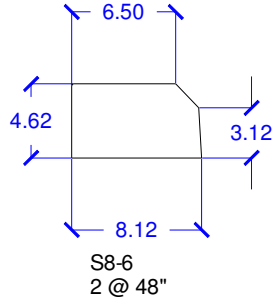
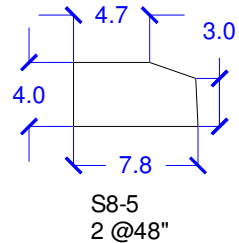
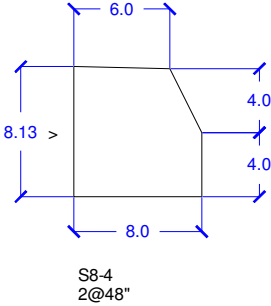
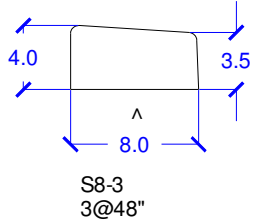
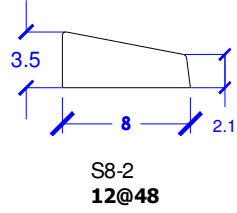
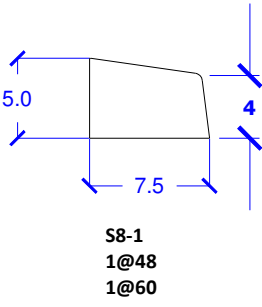
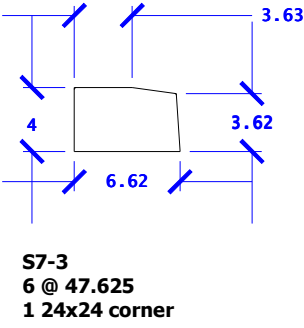
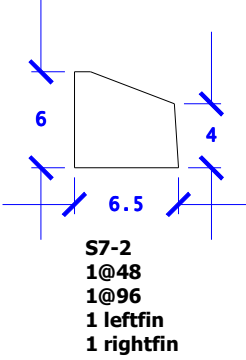


**S7-1**  
1@47.625

SILLS SHEET 5 - LAST REVISION 3/17/21



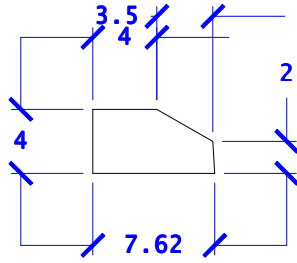
882 N. Marshall Way  
 Layton, UT 84041  
 Ph. (801) 544-9054  
 Fax: (801) 544-9154



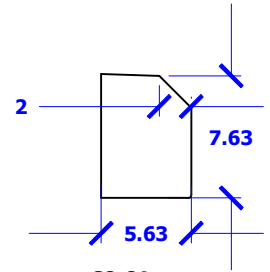
# SILLS SHEET 5 - LAST REVISION 3/17/21



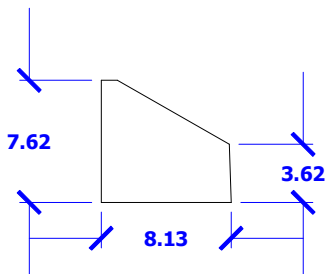
882 N. Marshall Way  
Layton, UT 84041  
Ph. (801) 544-9054  
Fax: (801) 544-9154



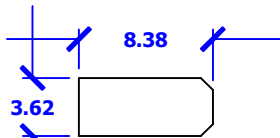
**S8-7**  
1 @ 72"



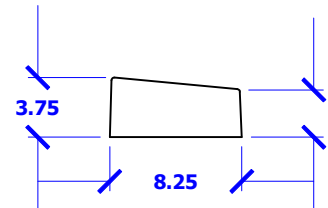
**S8-8A**  
4 at 120  
william penn



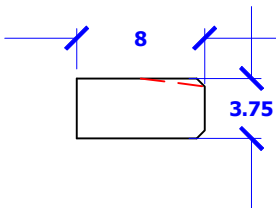
**S8-9**  
2 @ 47.625  
2 @ 96



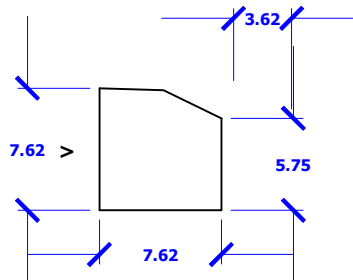
**S8-10**  
2 @ 72"



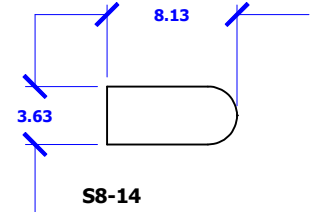
**S8-11**  
12 @ 48



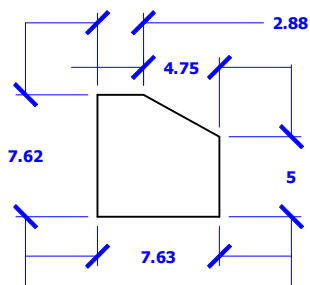
**S8-12**  
1 at 64 lug ends  
cypress



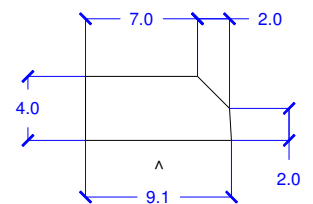
**S8-13**  
1 @ 96  
Desert Hills



**S8-14**  
8@48  
2 stretch corners  
Chase Bank



**S8-15**  
1 at 101.25 left  
1 at 101.25 right  
BYU Cannon Center

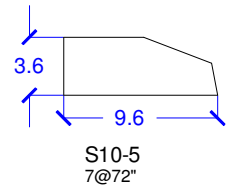
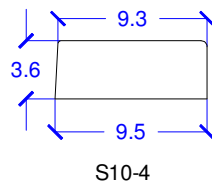
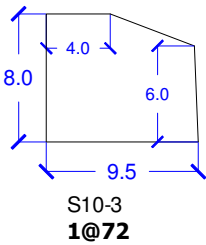
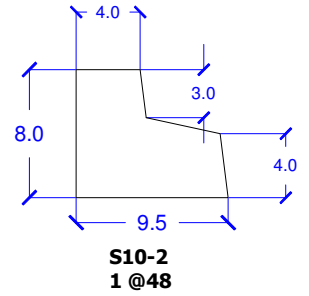
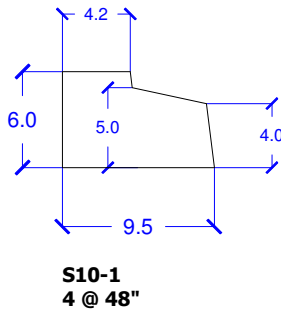
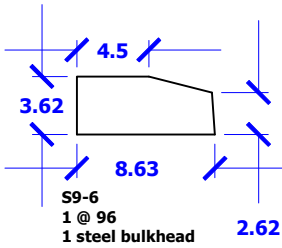
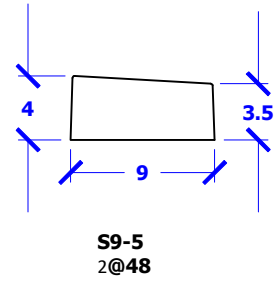
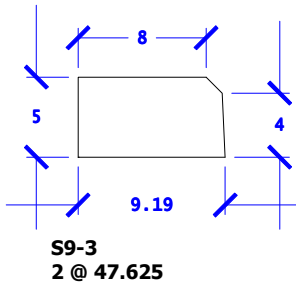
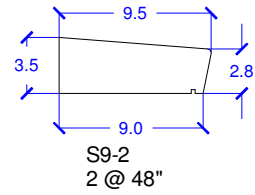


**S9-1**  
5@48"

# SILLS SHEET 6 - LAST REVISION 3/17/21



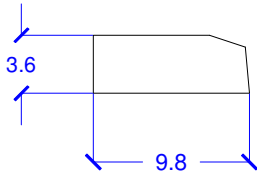
882 N. Marshall Way  
Layton, UT 84041  
Ph. (801) 544-9054  
Fax: (801) 544-9154



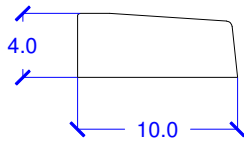
# SILLS SHEET 7 - LAST REVISION 3/17/21



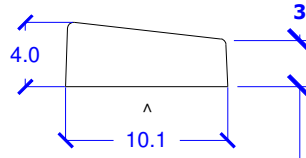
882 N. Marshall Way  
 Layton, UT 84041  
 Ph. (801) 544-9054  
 Fax: (801) 544-9154



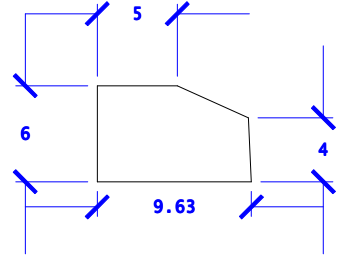
**S10-6**  
1@72"



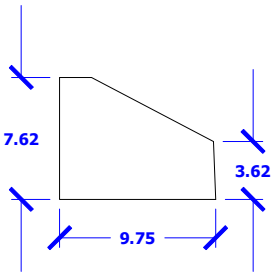
**S10-7**  
1@ 48



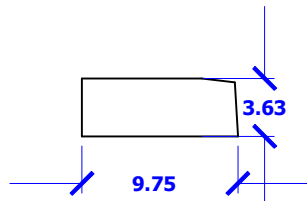
**S10-8**  
6@48



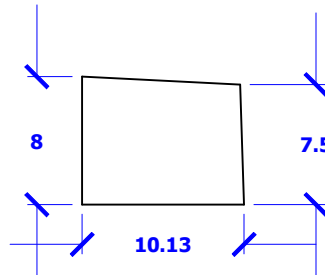
**S10-9**  
1@96+bulkhead



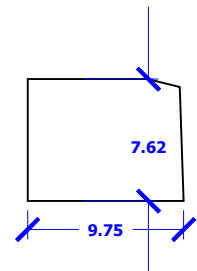
**S10-10**  
1@47.625  
1@72 rightfinend



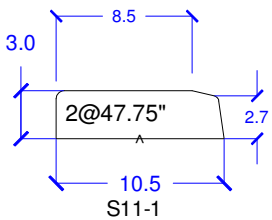
**S10-11**  
1 at 96



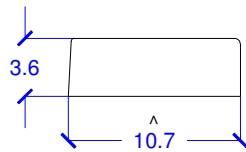
**S10-12**  
1 at 48"  
monache



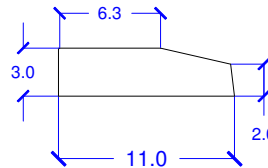
**S10-13**  
1@96  
Midway



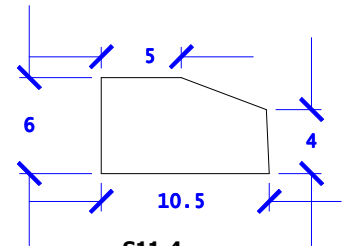
**S11-1**



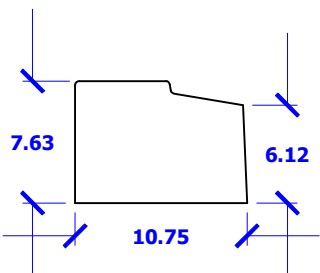
**S11-2**  
1@47.625



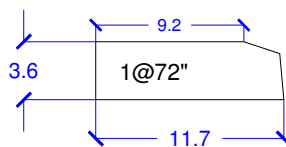
**S11-3**  
6 @ 60



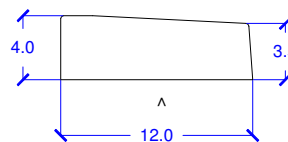
**S11-4**  
1@ 31.625  
1 leftfin  
1 rightfin



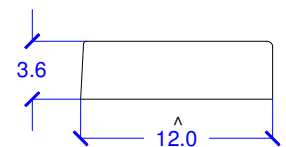
**S11-5**  
1 @ 96"



**S12-1**



**S12-2**  
1@48"



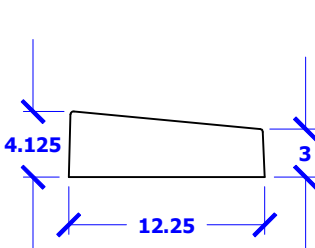
**S12-3**  
1@47.625"



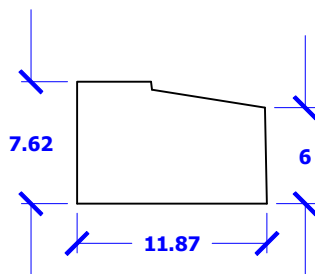
# SILLS SHEET 8 - LAST REVISION 3/17/21



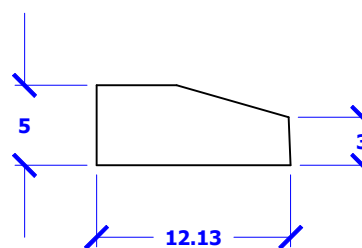
882 N. Marshall Way  
 Layton, UT 84041  
 Ph. (801) 544-9054  
 Fax: (801) 544-9154



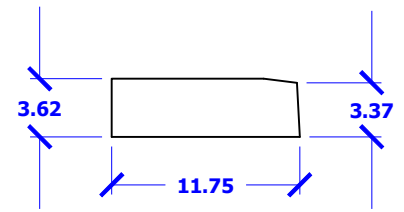
**S12-4**  
6 @ 48



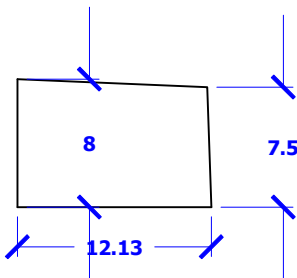
**S12-5**  
1 @ 72



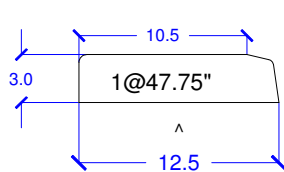
**S12-6**  
3 @ 96



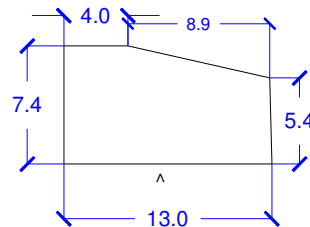
**S12-7**  
2 @ 96  
2 steel bulkheads



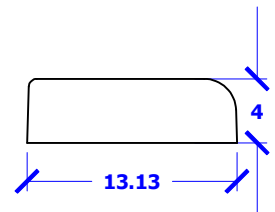
**S12-8**  
3 at 48  
Monache



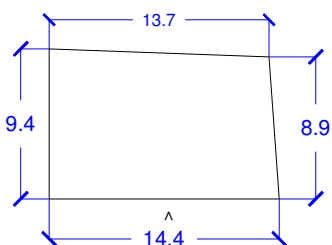
**S13-1**



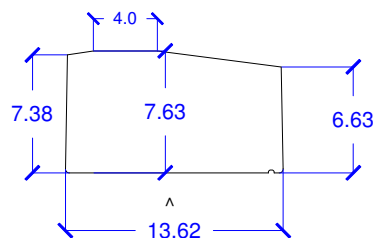
**S13-2**  
1 @ 48



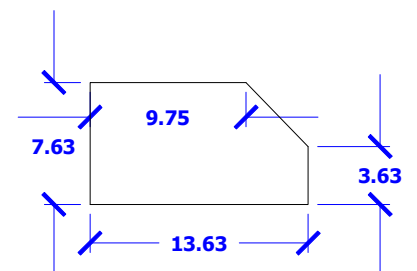
**S13-3**  
3 at 48  
1 corner 24x24



**S14-1**  
1 @ 72"



**S14-2**  
1 or  
3 @ 48

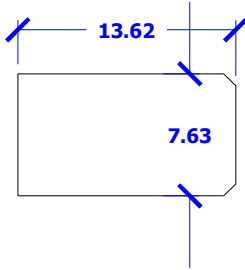


**S14-3**  
1 @ 47.625"

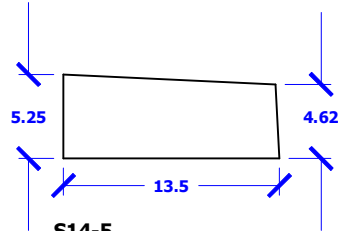
SILLS SHEET 9 - LAST REVISION 3/17/21



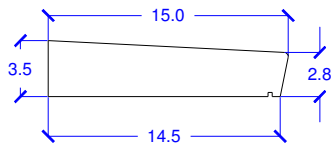
882 N. Marshall Way  
 Layton, UT 84041  
 Ph. (801) 544-9054  
 Fax: (801) 544-9154



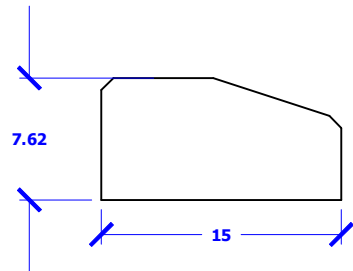
**S14-4**  
**1 @ 63.625"**



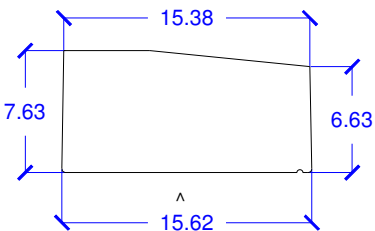
**S14-5**  
**5 at 72"**  
**Meridian Condos**  
**(Primary Children's)**



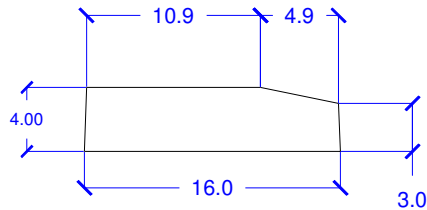
**S15-1**  
**1 @ 48"**



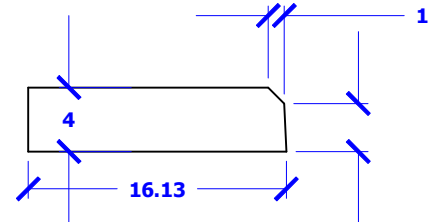
**S15-2**  
**1 @ 48**  
**Desert Hills**



**S16-1**  
**1 @ 48"**



**S16-2**  
**2 @ 48"**

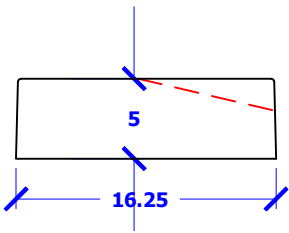


**S16-3**  
**2 @ 48**

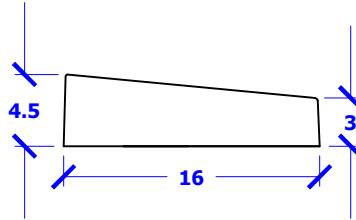
SILLS SHEET 10 - LAST REVISION 3/17/21



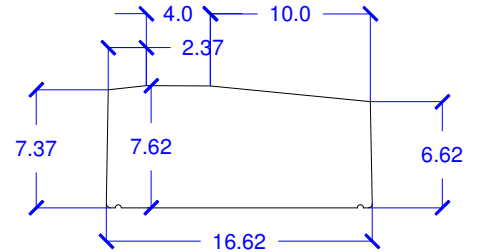
882 N. Marshall Way  
 Layton, UT 84041  
 Ph. (801) 544-9054  
 Fax: (801) 544-9154



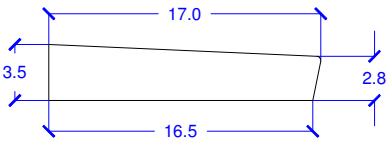
**S16-4**  
 2@95.625 lug ends



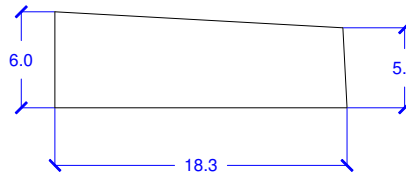
**S16-5**  
 2@48 2 steel bulkheads  
 G2Verizon



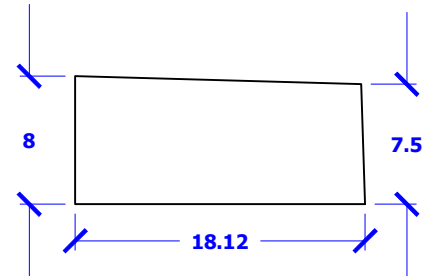
**S17-1**  
 2@48"



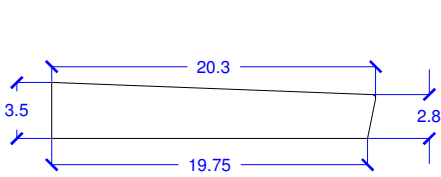
**S17-2**  
 1@48"



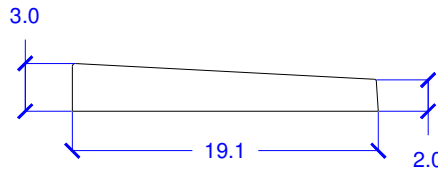
**S18-1**  
 1@36"



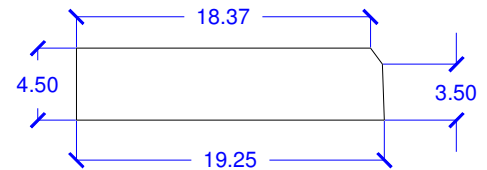
**S18-2**  
 2 at 48"  
 Monache



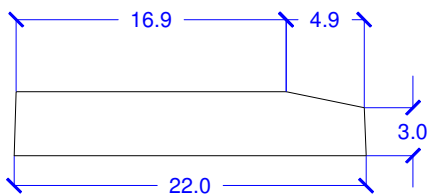
**S20-1**  
 1@48"



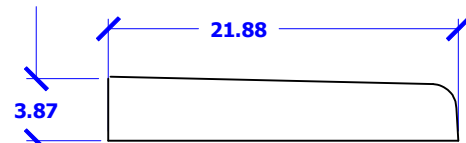
**S19-1**  
 2@24"



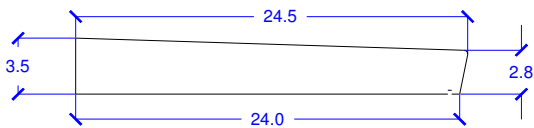
**S19-2**  
 2 @24"



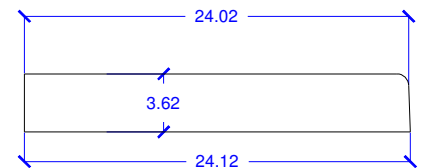
**S22-1**  
 2@24"



**S22-2**  
 2 at 47.63  
 1 double finished end  
 1 inside corner



**S24-1**  
 1 @ 36"



**S24-2**  
 1 @ 48"